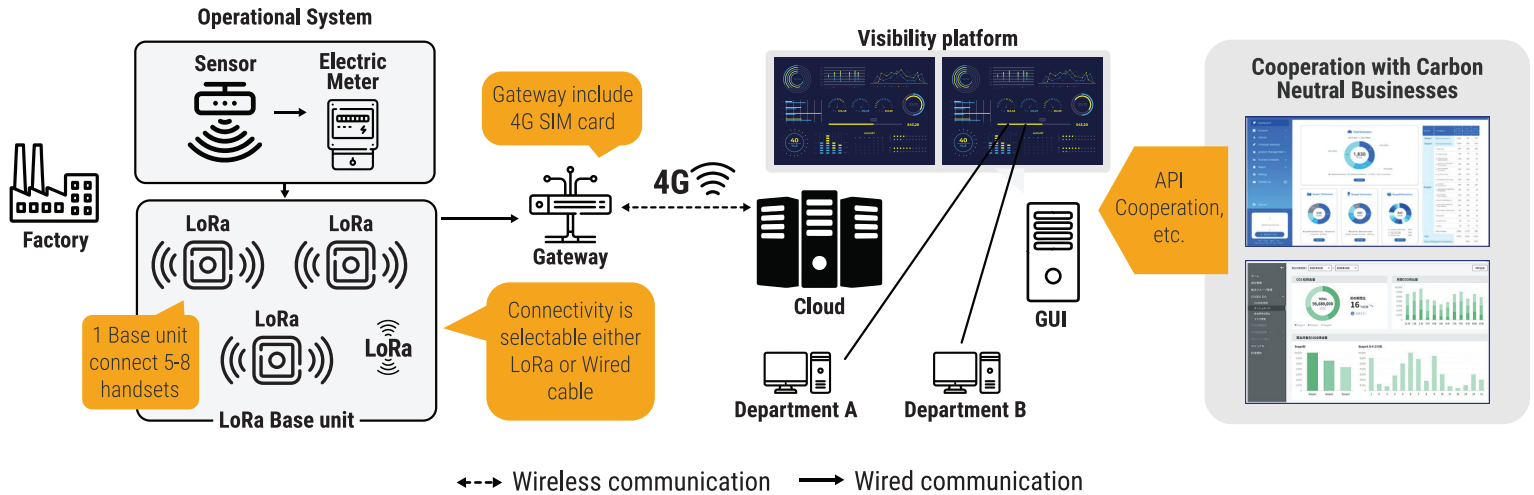
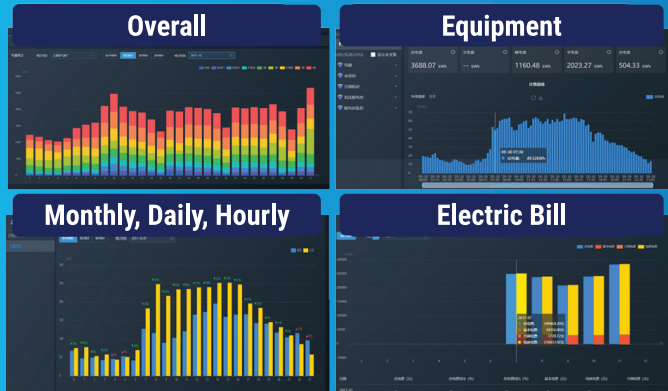


Electric Visibility Solution

Power Visualization Configuration



Power Visualization SaaS



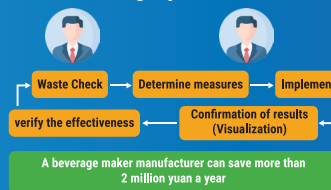
Feature

- ✓ Data collection via wireless LoRa communicator that can communicate over 1 km.
- ✓ Easy to install with existing factory with wireless configuration
- ✓ Because it is cloud based, it can be expanded after seeing the effectiveness of the initial investment.
- ✓ Can confirm electric consumption trend by monthly, daily, hourly

Power Saving Point

Understand the overall situation of power consumption then determine measures to save electricity and verify the effectiveness

Power Saving Cycle



Power Saving Measures Plan

- | | |
|--|--|
| 1. Compressor (Air leak, Reduce qty., Adjusting pressure, Filter cleaning) | 4. Change production time (Cost reduction) |
| 2. LED lighting (Change) | 5. Equipment replacement (Energy saving equipment) |
| 3. Air Conditioner (Temperatures control, Filter cleaning) | 6. Insulation |
| 4. Solar Power (Reduction power consumption from Power plant) | 7. Other |

If we can see the electricity usage status of each facility, we can take measures!

Improvement of electricity volume reduction through operations, etc.

Further reductions at each facility

Compressor air leak

Air conditioner

Chiller

Production equipment

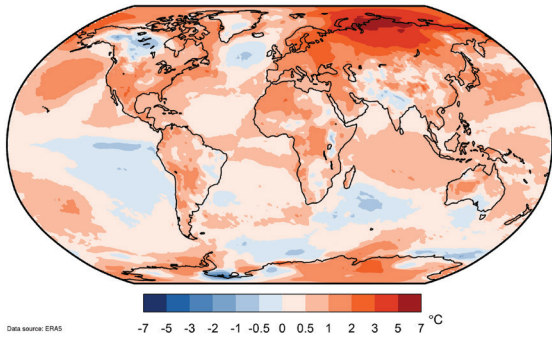


KDDI (Thailand) Co.,Ltd.
 LinkedIn: KDDI (Thailand) Ltd.
 Tel: 02-075-8888 / Email: bd@kddi.co.th

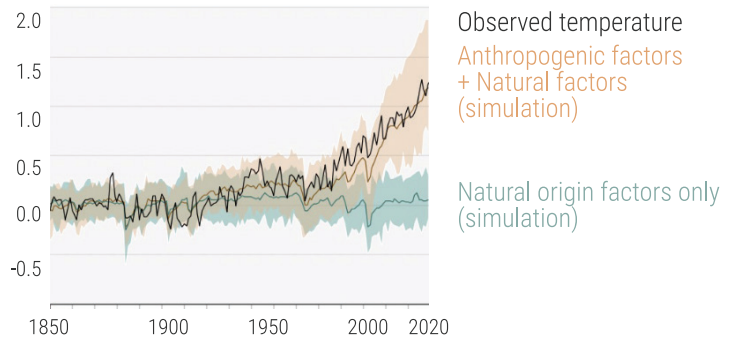


Global greenhouse gas concentrations set a new record in 2021

Global temperature rise in 2020

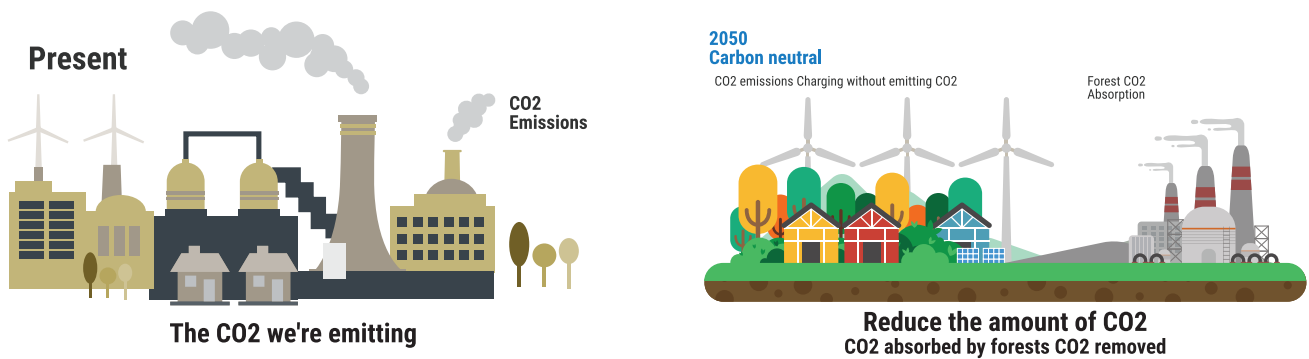


Change in global average temperature



- Global average temperature set a record high in 2020. The next year, 2021, was the fifth warmest on record.
 - In 2021, the average temperature was 1.2 degrees Celsius higher than during the Industrial Revolution, although it was lower than the previous year.
- Carbon dioxide and methane levels in the atmosphere were at record highs.
- It is clear that recent global warming is due to human activities, not natural variability. (IPCC AR6)

Balancing greenhouse gas emissions and absorption



In October 2020, the government declared carbon neutrality, reducing greenhouse gas emissions to 0 by 2050. "Zero emissions as a whole" means that emissions of carbon dioxide and other greenhouse gases will be reduced to 0 by subtracting "sinks" from afforestation and forest management.

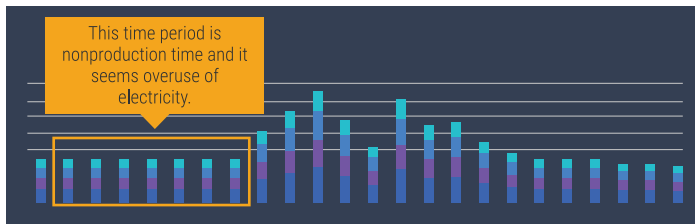
introduction effect

Can be applied to the planning of energy-saving measures, as shown in the following examples

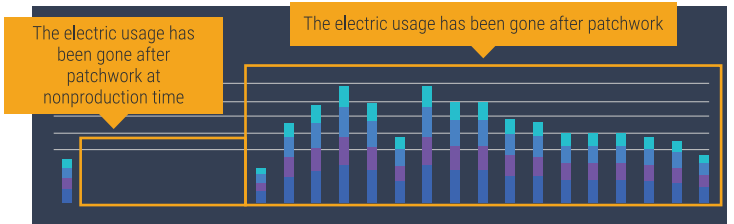
- Capable of obtaining electricity consumption per facility by time of day and checking whether extra electricity is used
- If there is waste, check the effect after dealing with it

Decrease approximately 3 % of electric usage

Before



After



An example of the effect of installation If we can achieve 3% reduction in electricity per year, the cost reduction effect 40 million yen x 3% = equivalent to 1.2 million yen

